



MODEL Homogenizer HA33

MODEL	MAX. POWER kW	PRESSURE bar							CAPACITY l/h
		100	180	200	250	300	400	600	
HA33	45	15.000	8.000	7.500	6.000	5.000	3.500	2.500	

*Values referring to machines with fixed capacity

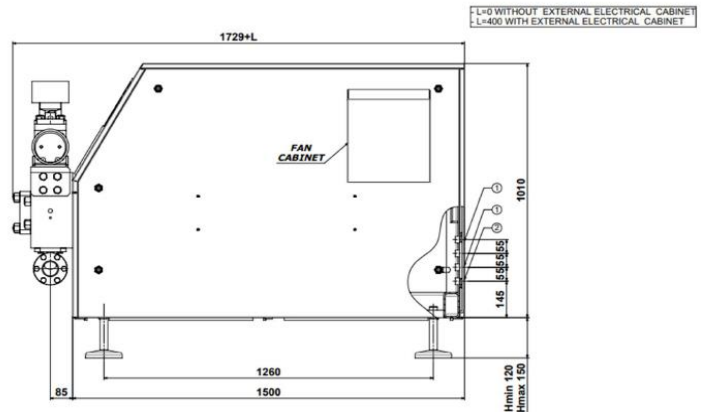
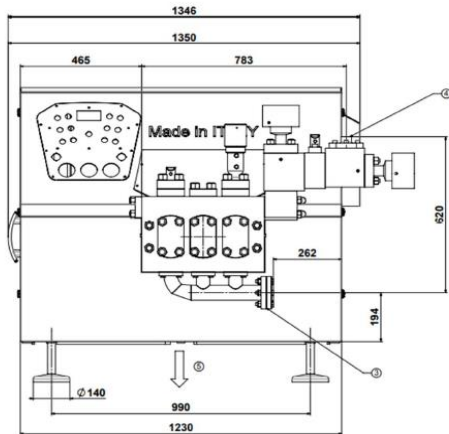
**Values referring to products with a max viscosity of 500Cp

TECHNICAL DATA

Plunger number	3
Stroke (mm)	76,2
Weight (kg)	1.600
Water consumption (l/h)	90
Lubrication oil quantity (kg)	25
Connection product inlet/outlet	Socket weld flange \varnothing e63.6 \varnothing i56 / \varnothing e38 \varnothing i32
Max. installed power (kW)	45

Design according to MACHINE DIRECTIVES and the HARMONIZED EUROPEAN STANDARD in force.





FEATURES

Liquid End: Forged block made from Duplex SAF2205, Self-alignment patented system, 3 plungers made from A630 with Chromium Carbide coating

Homogenizing group:

- Hydro-pneumatic adjustment of the pressure for a great stability
- Stellite™ Homogenizing valves

Conical valve seats and poppet/ball valves made from Stellite™

Digital pressure transmitter 4-20 mA with ceramic membrane

Overpressure valve, flow switch alarm on water circuit

Drive unit:

- Splash lubrication system
- Die cast iron crankcase
- Nitridized crankshaft
- Direct transmission system with internal gear reducer with belts and pulleys

Terminal box and control panel for local/remote control

Easy opening panels

Friendly maintenance of the liquid end

MAIN OPTIONS

Second stage homogenizing group

Forged block made from Super Duplex SAF2507

Aseptic execution

- Sterile water generator by means of condensed steam generator
- Patent pending sterile water generator by means of microfiltration

Design suitable with: 3A, EHEDG or PHARMA

- Low roughness and electropolished wetted parts
- Certification manual for cGMP

Standard or Sharp Edge Homogenizing valve with different geometries, materials availability:

- Tungsten Carbide
- Ceramics

Seat valves made from Tungsten Carbide

Vibration and temperature monitoring and alarms

Pumping plungers availability:

- A316 with HVOF Chromium Carbide jet coat treatment
- Ceramics

Electric power board:

- For Fixed or Variable capacity, installable on the machine back side
- Remote Control by 4-20 mA signal
- Fully Automatic pressure control by means of PLC

Sound-proof design

Inlet and outlet connections:

- DIN 11851, Tri-clamp, SMS
- High pressure outlet
- Option upon request

Explosion proof design

